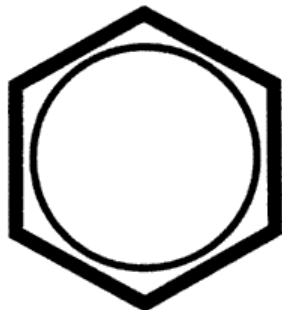
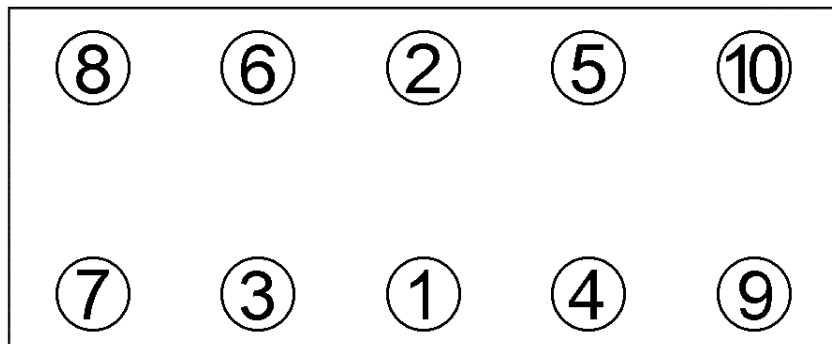




Anziehvorschrift Zylinderkopf**Tightening Instructions for Cylinder Head****Instructions de serrage pour culasse****Prescripciones de apriete para culatas****040.554**passend für / suitable for
adaptable à / adaptable a**Fiat/Lancia****Das Original**Schraubenkopf / Head shape Anziehreihenfolge/Tightening sequence/Ordre de serrage/Orden de apriete
Tête de vis / Cabeza de tornillo760.720
M 9x1,25x96Anziehen/
Tightening/
Serrage/
Apriete
 20 Nm
 30 Nm
 90°
 90°
Zeichenerklärung / Explanations / Explication / Explicacion

	neue Zylinderkopf-schrauben verwenden	use new cylinder head bolts	utiliser des vis neuves	emplar tornillos nuevos
*	Warmlauf (80°C)	warm up time (80°C)	chauffage (80°C)	calentamiento (80°C)
	Schrauben einzeln lösen und wieder anziehen	loosen and tighten each bolt	deserrer et serrer vis par vis	aflojar y apretar tornillo a tornillo
●	Setzzeit	relaxation time	durée de tassement	tiempo de espera
➤	Drehwinkel	torque angle	angle de serrage	ángulo de giro

Motortyp / Engine type / Type de moteur / Tipo de motor

÷ 0,49 mm, 72,4 mm

Mot.: 169 A4.000, 199 A4.000 350 A1.000

1,2 ltr.-1,4 ltr. 8V

Mito, 500, Doblo, Idea, Musa, Palio, Panda,
Punto, Qubo, Siena, Strada, Ypsilon**Elring-Serviceteam**

Fon +49 7123 724 799

Fax +49 7123 724 798

service@elring.de

24/01/22

040.554